

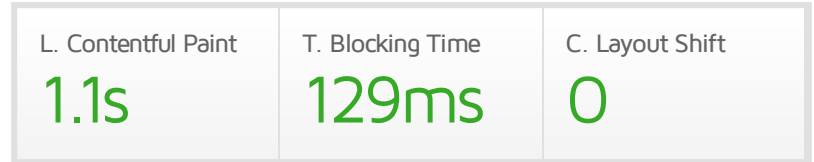
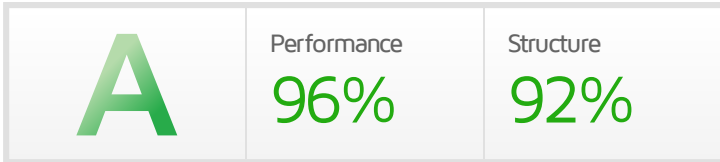
Performance Report for:

https://monster.webvoltytemplate.com/presta/v4_outfit_142/en/

Report generated: Wed, Nov 2, 2022 2:40 AM -0700

Test Server Location: Vancouver, Canada

Using: Chrome (Desktop) 103.0.5060.134, Lighthouse 9.6.4



Top Issues

IMPACT	AUDIT	
Med	Avoid an excessive DOM size <small>TBT</small>	1,867 elements
Med-Low	Serve static assets with an efficient cache policy	Potential savings of 105KB
Low	Use passive listeners to improve scrolling performance	1 event listener not passive
Low	Reduce unused JavaScript <small>LCP</small>	Potential savings of 270KB
Low	Eliminate render-blocking resources <small>FCP LCP</small>	Potential savings of 16ms

Page Details



Total Page Size - 1.23MB



Total Page Requests - 46



■ HTML
 ■ JS
 ■ CSS
 ■ IMG
 ■ Video
 ■ Font
 ■ Other

How does this affect me?

Today's web user expects a fast and seamless website experience. Delivering that fast experience can result in increased visits, conversions and overall happiness.

As if you didn't need more incentive, **Google has announced that they are using page speed in their ranking algorithm.**

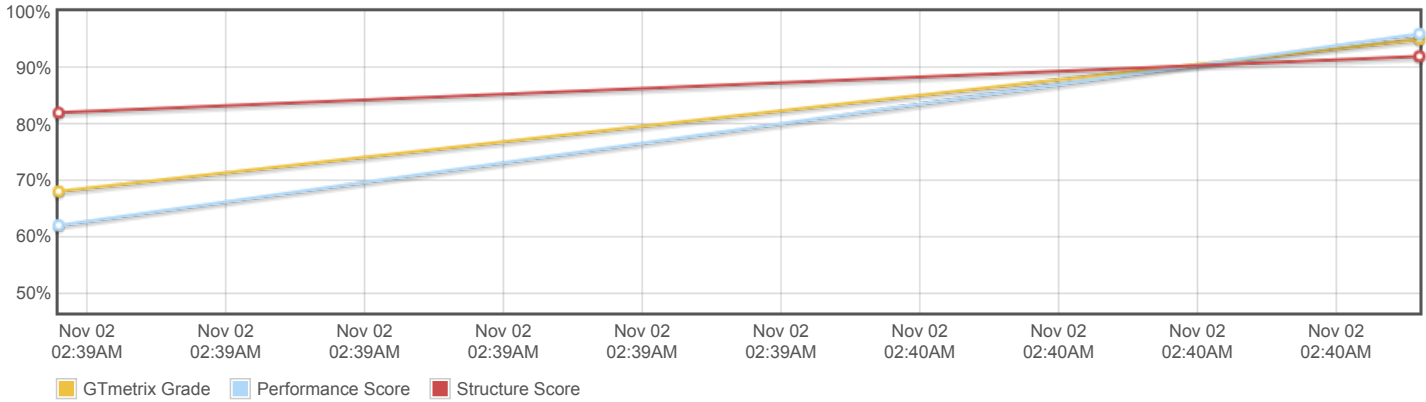
About GTmetrix

CARBON60
THE MANAGED CLOUD COMPANY

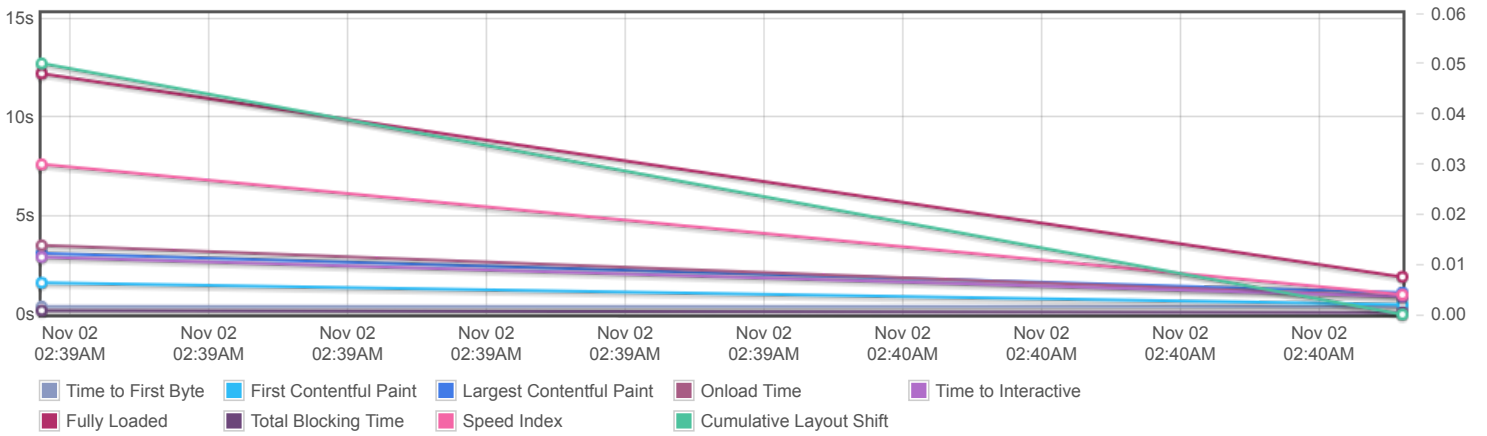
GTmetrix is developed by the good folks at Carbon60, a Canadian hosting company with over 26 years experience in web technology.

<https://carbon60.com/>

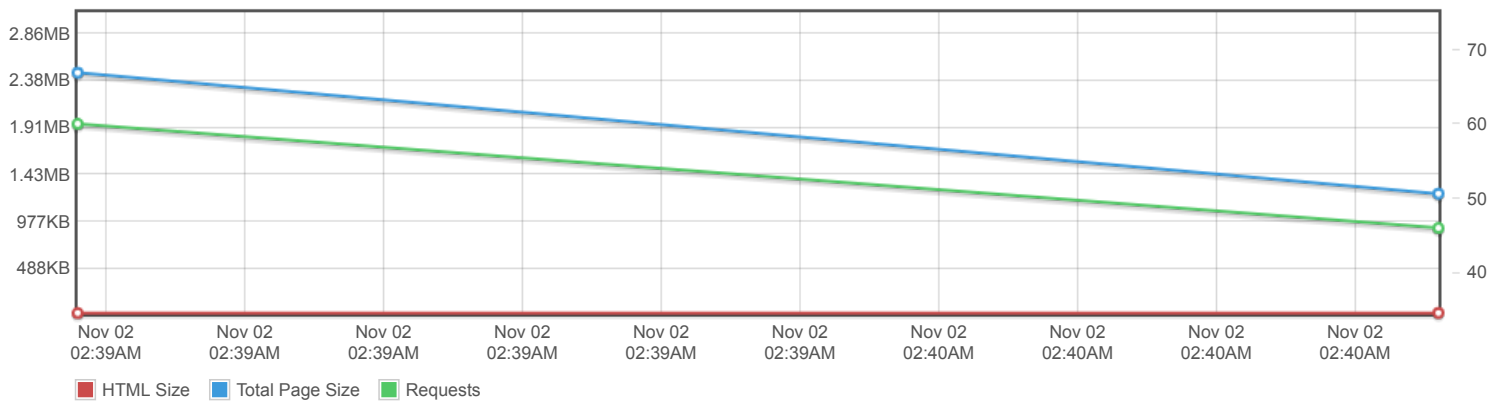
Page scores



Page metrics

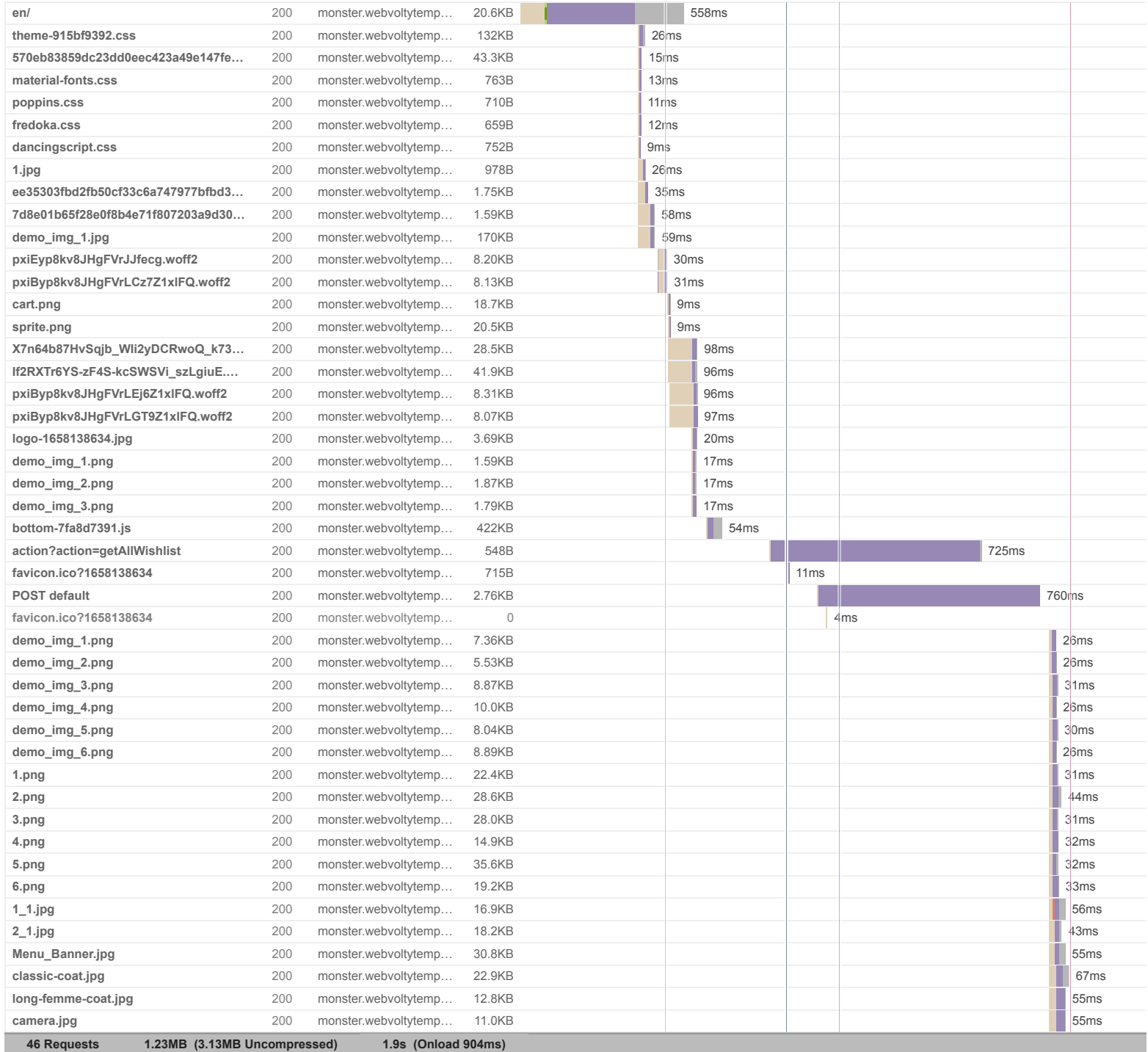


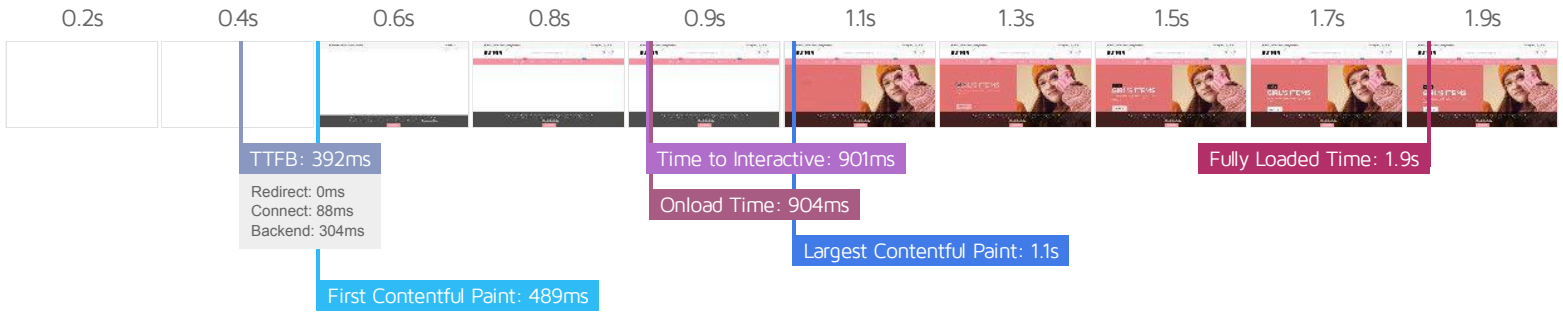
Page sizes and request counts



The waterfall chart displays the loading behaviour of your site in your selected browser. It can be used to discover simple issues such as 404's or more complex issues such as external resources blocking page rendering.

OutFits Fashion Store





Performance Metrics

<p>First Contentful Paint</p> <p>How quickly content like text or images are painted onto your page. A good user experience is 0.9s or less.</p>	<p>Good - Nothing to do here</p> <p>488ms</p>	<p>Time to Interactive</p> <p>How long it takes for your page to become fully interactive. A good user experience is 2.5s or less.</p>	<p>Good - Nothing to do here</p> <p>901ms</p>
<p>Speed Index</p> <p>How quickly the contents of your page are visibly populated. A good user experience is 1.3s or less.</p>	<p>Good - Nothing to do here</p> <p>1.0s</p>	<p>Total Blocking Time</p> <p>How much time is blocked by scripts during your page loading process. A good user experience is 150ms or less.</p>	<p>Good - Nothing to do here</p> <p>129ms</p>
<p>Largest Contentful Paint</p> <p>How long it takes for the largest element of content (e.g. a hero image) to be painted on your page. A good user experience is 1.2s or less.</p>	<p>Good - Nothing to do here</p> <p>1.1s</p>	<p>Cumulative Layout Shift</p> <p>How much your page's layout shifts as it loads. A good user experience is a score of 0.1 or less.</p>	<p>Good - Nothing to do here</p> <p>0</p>

Browser Timings

Redirect	0ms	Connect	88ms	Backend	304ms
TTFB	392ms	First Paint	489ms	DOM Int.	899ms
DOM Loaded	901ms	Onload	904ms	Fully Loaded	1.9s

IMPACT	AUDIT	
Med	Avoid an excessive DOM size <small>TBT</small>	1,867 elements
Med-Low	Serve static assets with an efficient cache policy	Potential savings of 105KB
Low	Use passive listeners to improve scrolling performance	1 event listener not passive
Low	Reduce unused JavaScript <small>LCP</small>	Potential savings of 270KB
Low	Eliminate render-blocking resources <small>FCP LCP</small>	Potential savings of 16ms
Low	Reduce unused CSS <small>FCP LCP</small>	Potential savings of 121KB
Low	Avoid enormous network payloads <small>LCP</small>	Total size was 1.23MB
Low	Properly size images	Potential savings of 22.1KB
Low	Ensure text remains visible during webfont load <small>FCP LCP</small>	1 font found
Low	Avoid long main-thread tasks <small>TBT</small>	2 long tasks found
Low	Reduce JavaScript execution time <small>TBT</small>	280ms spent executing JavaScript
Low	Serve images in next-gen formats	Potential savings of 280KB
Low	Reduce initial server response time <small>FCP LCP</small>	Root document took 303ms
Low	Avoid serving legacy JavaScript to modern browsers <small>TBT</small>	Potential savings of 98B
Low	Defer offscreen images	Potential savings of 38.2KB
Low	Avoid non-composited animations <small>CLS</small>	27 animated elements found
Low	Avoid chaining critical requests <small>FCP LCP</small>	2 chains found
N/A	Largest Contentful Paint element <small>LCP</small>	1 element found
N/A	Avoid large layout shifts <small>CLS</small>	5 elements found
N/A	Minimize main-thread work <small>TBT</small>	Main-thread busy for 853ms
N/A	User Timing marks and measures	
N/A	Reduce the impact of third-party code <small>TBT</small>	